



**Thurlton Court, Coles Road, Milton, Cambridge, CB24 6BW**

**CHEFFINS**



## Coles Road

Milton, Cambridge,  
CB24 6BW

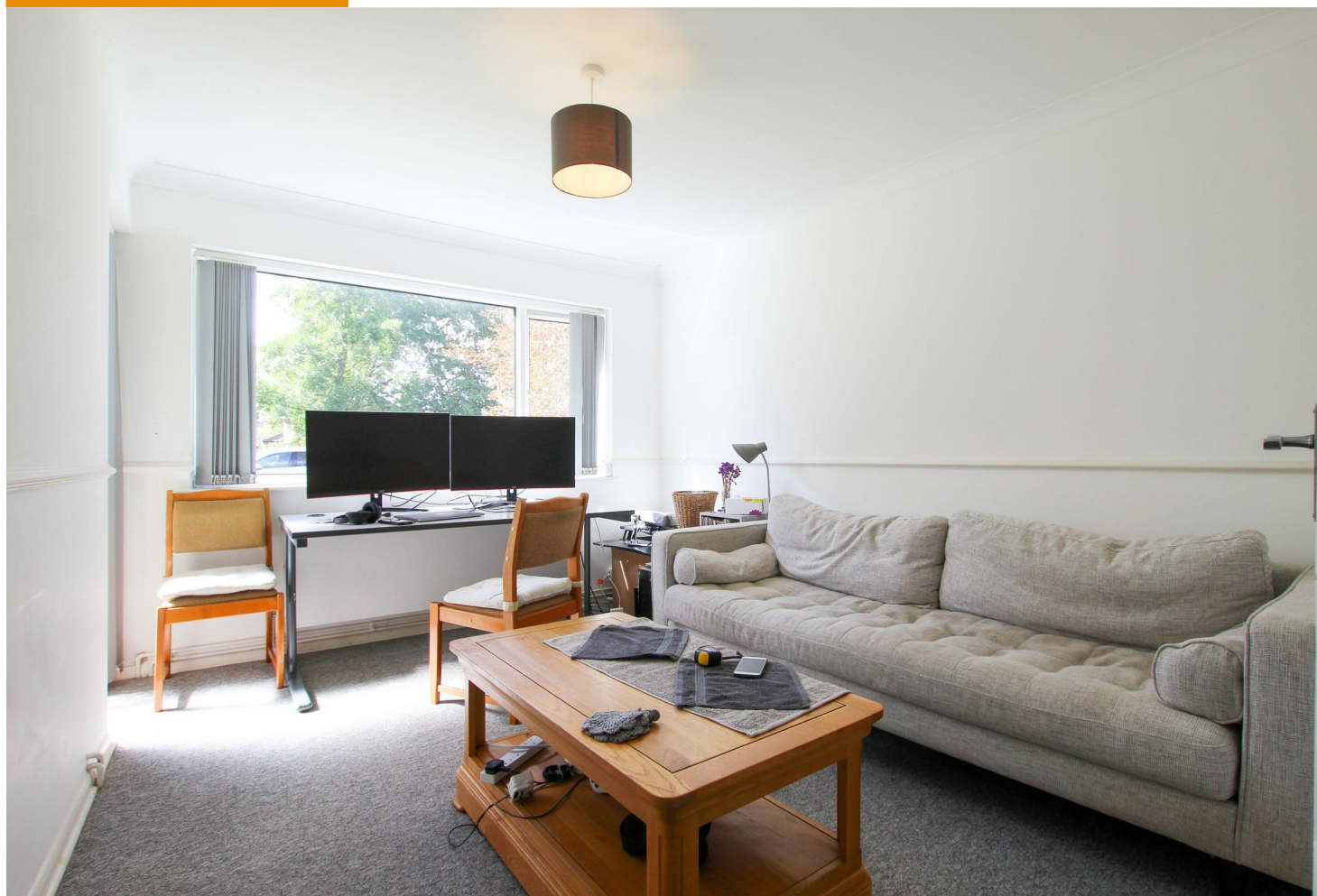
A well presented 2 bedroom ground floor apartment located in this well served north Cambridge village with easy access to the Science Park, Cambridge and A14/M11. The accommodation comprises entrance hall, living room, kitchen, 1 double bedroom, 1 single bedroom and bathroom. Off street parking and communal grounds. We regret no pets. Unfurnished. Available from 06/10/2025. EPC: C and Council Tax Band: B.

### LOCATION

Milton is a well served village approximately 3 miles distant to the North of Cambridge. It offers extensive amenities including a Tesco supermarket, village stores, hairdressers, public houses and restaurants. The neighbouring village of Waterbeach also has it's own mainline train station providing a commuter service to London, Cambridge and Kings Lynn. There is also a bus service running from the village to Cambridge city centre and a nearby park and ride service. Walkable distance to the property is Milton Country Park.

🛏️ 2 🚿 1 🛋️ 1

£1,200 PCM





## COMMUNAL ENTRANCE

with door to:

## ENTRANCE HALLWAY

with built in storage cupboard. The living room, kitchen, bedrooms and bathroom are accessed off the entrance hallway.

## LIVING ROOM

with window to front aspect and door to ground level balcony.

## KITCHEN

newly fitted kitchen with soft close base and wall units, work tops, sink with window to side aspect above, oven, ceramic hob with extractor above, fridge freezer, washer dryer and door with access to rear.

## BEDROOM 1

with window to rear aspect.

## BEDROOM 2

with window to front aspect.

## BATHROOM

with shower over bath, wash basin, toilet, wall mounted mirrored cabinet and window to side aspect.

## LETTING AGENT NOTES

For more information on this property please refer to the Material Information brochure on our Website.

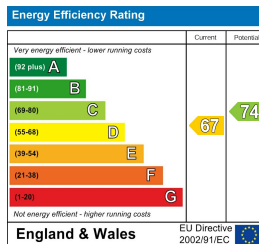
Term - Minimum 12 month tenancy

Holding Deposit - £276

Deposit - £1384







Total area: approx. 43.1 sq. metres (464.3 sq. feet)

Agents note:

For more information on this property please refer to the Material Information Brochure on our website.

Clifton House, 1-2 Clifton Road, Cambridge, Cambridgeshire, CB1 7EA | 01223 271916 | cheffins.co.uk

IMPORTANT: we would like to inform prospective purchasers that these sales particulars have been prepared as a general guide only. A detailed survey has not been carried out, nor the services, appliances and fittings tested. Room sizes should not be relied upon for furnishing purposes and are approximate. If floor plans are included, they are for guidance only and illustration purposes only and may not be to scale. If there are any important matters likely to affect your decision to buy, please contact us before viewing the property.

